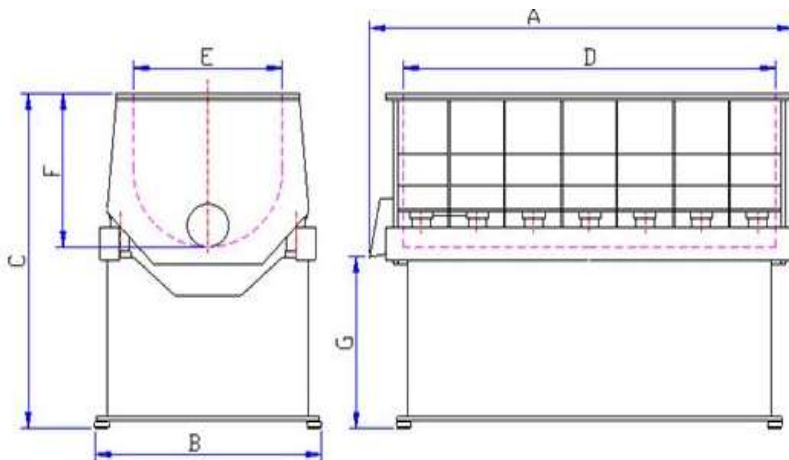


Vibratory Tub Finishing Machine

Type: EVT



TRUMLINGSAKTIEBOLAGET



TYP	VOLYM l	MOTOREFFEKT Kw	VIKT kg	A	B	C	D	E	F	G
EVT-20	20	0,55	90	785	385	600	520	165	210	390
EVT-50	50	2,2	300	960	535	1140	750	255	325	760
EVT-80	80	0,75	110	1055	646	940	850	275	345	600
EVT-130	130	1,1	330	1160	620	930	960	345	410	480
EVT-145	145	1,1	440	1300	620	930	1100	345	410	480
EVT-170	170	1,1	470	1500	620	930	1300	345	410	480
EVT-250	250	2,2	600	1785	775	1190	1500	390	450	665
EVT-320	320	2,2	770	1445	800	1160	1220	510	550	555
EVT-380	380	3	850	1715	800	1160	1520	510	550	555
EVT-400	400	4	950	2200	800	1170	2000	400	500	600
EVT-420	420	3	990	1925	800	1160	1700	510	550	600
EVT-475	475	4	950	1445	914	1210	1220	610	610	545
EVT-500	500	5,5	1080	1750	914	1210	1525	610	610	545
EVT-600	600	5,5	1270	2165	906	1210	1925	600	585	575
EVT-800	800	5,5	1600	1745	1034	1530	1500	750	840	625

EVT

Straight Tub finishing machine

Suitable for long or large workpieces and can be equipped with divider plates to separate and protect sensitive components.

The EVT series is characterized by high performance, quality, and long lifespan with a strong steel construction, welded and stress relieved container for maximum durability.

The interior is lined with durable hot cured polyurethane lining for extended lifespan, High efficiency is ensured by a powerful enclosed vibration motor with adjustable weights.

The control panel includes an electronic timer for process control and the machine can also be equipped with speed control as an option.

Additionally, it has an effective soundproofing cover that is easy to use.

TRUMLINGSAKTIEBOLAGET